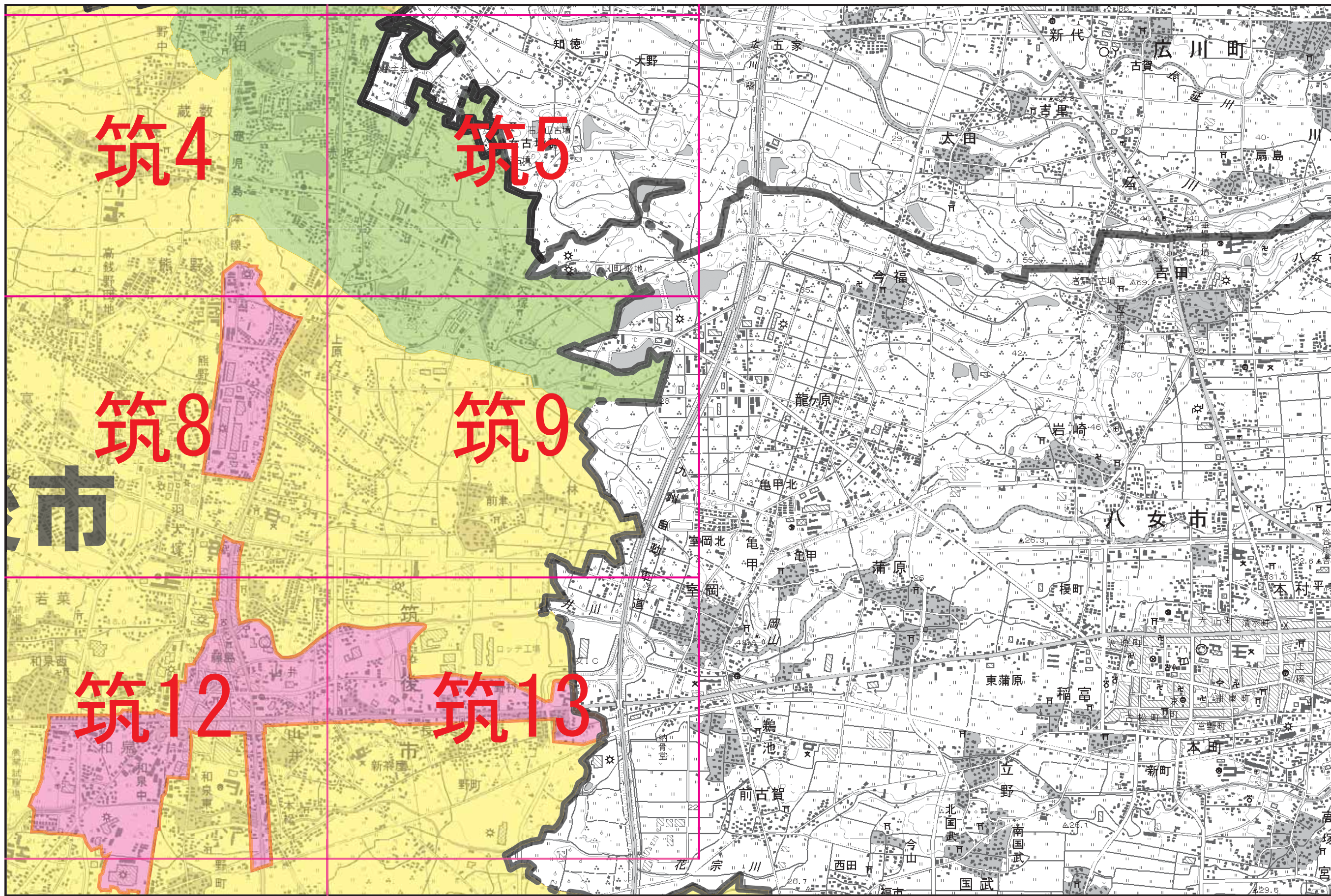










- | | | | |
|--|--|--|--|
|  河川の軸 |  丘の景域 |  田園の景域 |  干拓地の景域 |
|  山の景域 |  谷あいの景域 |  掘割・クリークの景域 |  まちの景域 |



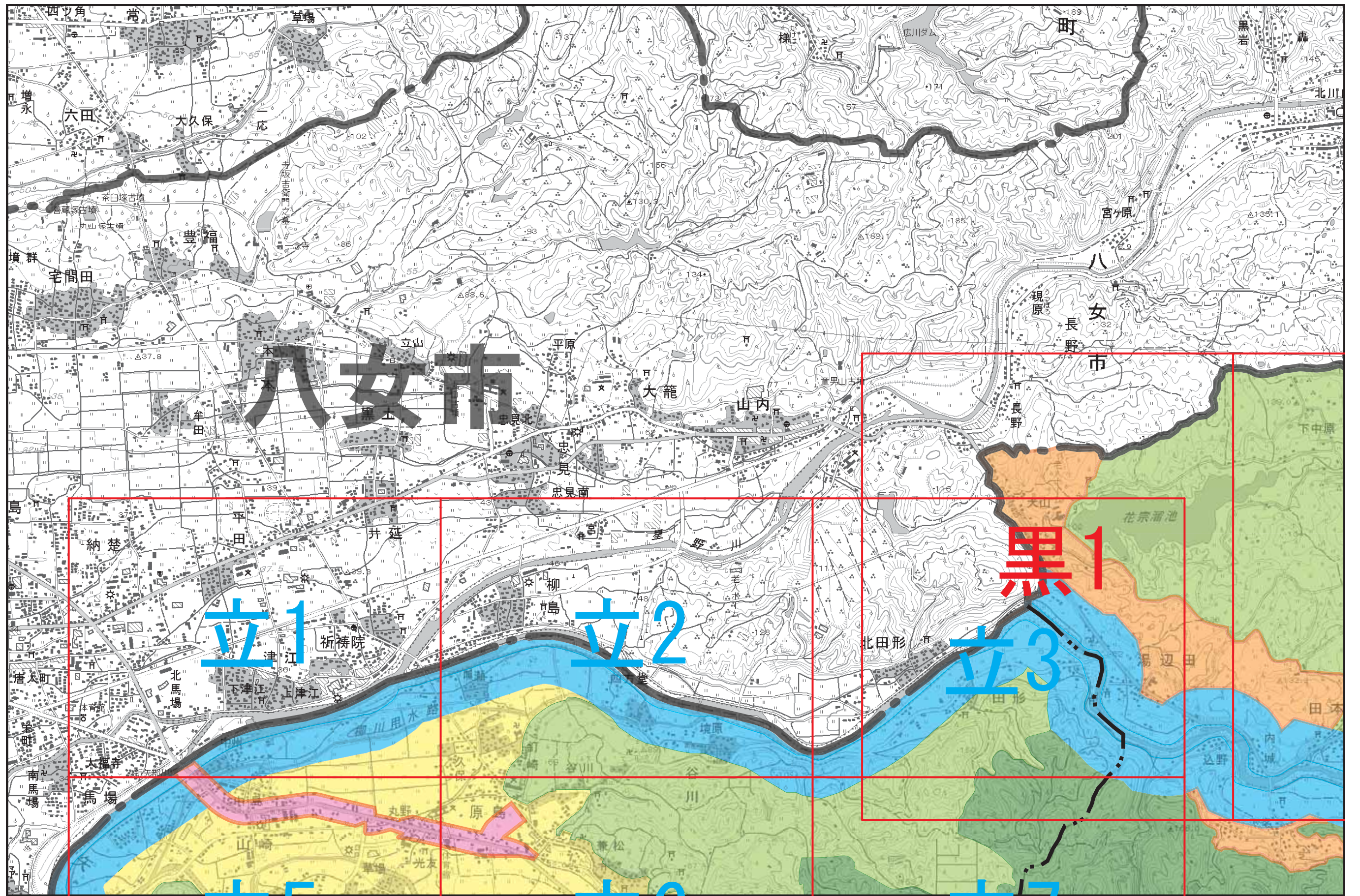


- | | | | |
|--|--|--|--|
|  河川の軸 |  丘の景域 |  田園の景域 |  干拓地の景域 |
|  山の景域 |  谷あいの景域 |  掘割・クリークの景域 |  まちの景域 |

0 0.5 1.0 2.5km

S = 1 / 20,000





- | | | | |
|--|--|--|--|
|  河川の軸 |  丘の景域 |  田園の景域 |  干拓地の景域 |
|  山の景域 |  谷あいの景域 |  掘割・クリークの景域 |  まちの景域 |

